



**West
Midlands
Rail Executive**



**Transport for
West Midlands**

Railfuture AGM

A rail story continues...

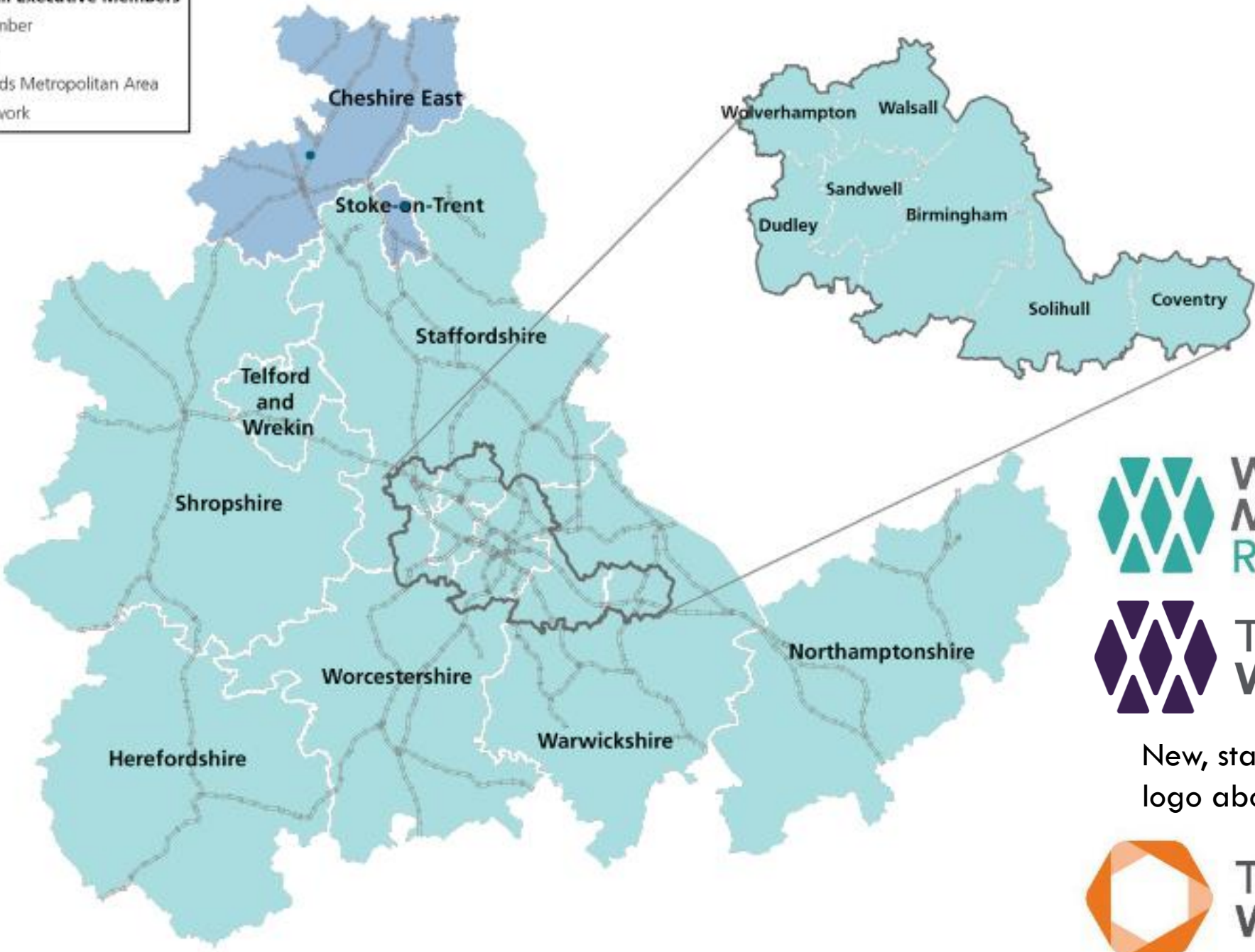
Malcolm Holmes

17 July 2021

**West Midlands Rail Executive is a movement for change,
driving a revolution in rail services for West Midlanders**

West Midlands Rail Executive Members

-  Affiliate Member
-  Full Member
-  West Midlands Metropolitan Area
-  Railway Network



New, standardised, TfWM logo above. Old logo below:



New branding based on TfL



Transport for West Midlands



The Vision :

WMCA

**Building a healthier, happier, better connected
and more prosperous West Midlands**

TfWM

**Co-ordinating investment to improve
the region's transport infrastructure**



Delivering a world-class integrated & reliable transport system.



Improving health and quality of life throughout the West Midlands.



Providing clean, safe and affordable travel options.



Excellent customer service and simple payment & ticketing options.



**West
Midlands
Rail Executive**

**West Midlands Rail Executive is
a movement for change, driving
a revolution in rail services for
West Midlanders**

COVID-19

EMAs/ERMAs – cost and revenue risk

Challenges: demand 40% costs – huge

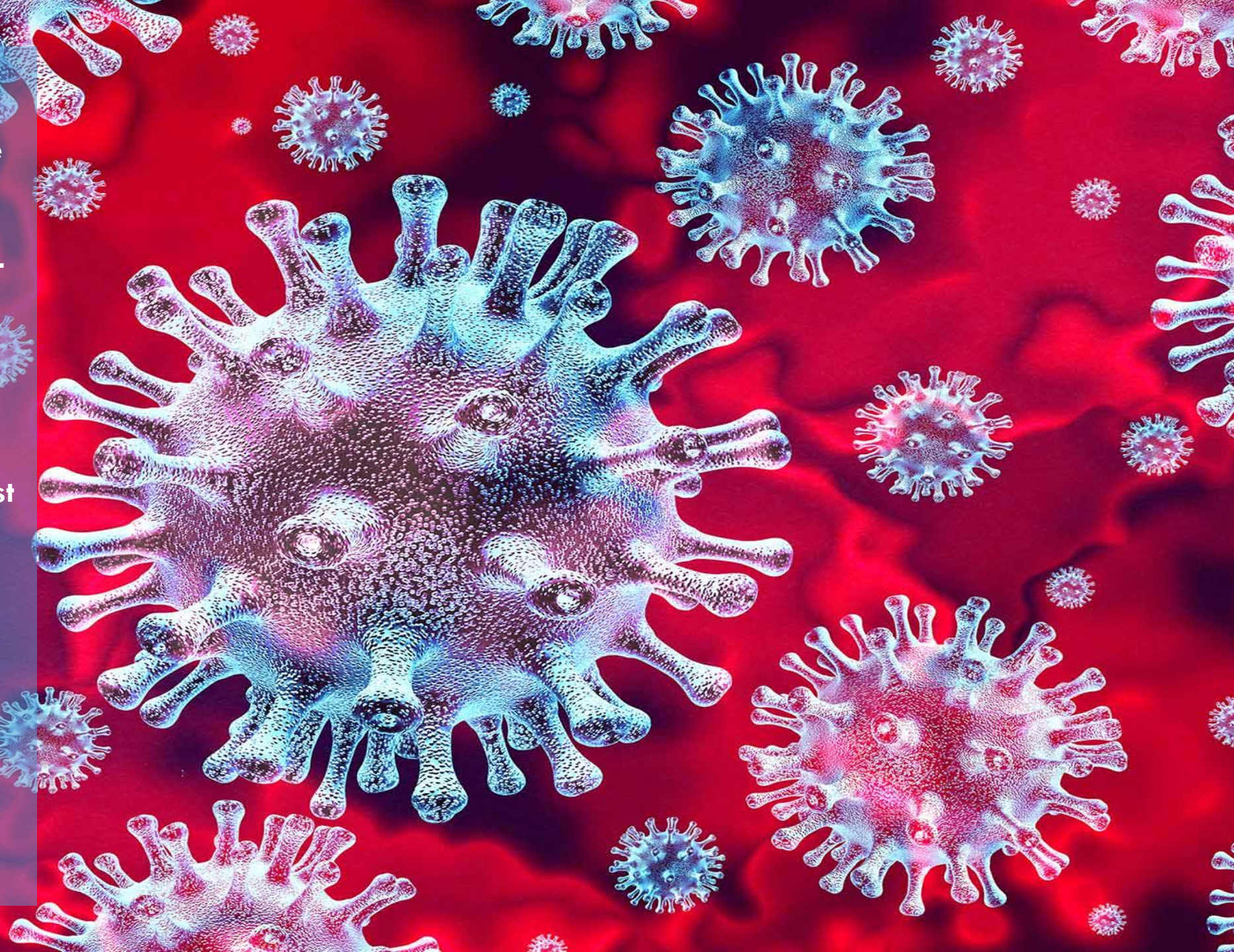
Lowest demand since mid-19th century

Revenue down by 93.6% at worst – £600m per month – HMT pressure

Performance

Driver shortages/track and trace

How will railways recover? Homeworking
NRC ABP



Great British Railways

The Williams-Shapps Plan for Rail



- Biggest reform in 25 years
- Ambition – right direction
- Devolution vs devolution
- Light on policy detail for what it means for city regions
- We need to retain a strong role and grow it
- Focus on outcomes/ITS
- Strong foundations in the West Midlands



West Midlands
Grand Railway
Collaboration



GRAND CENTRAL

Entrance

Stourbridge Town Branch

Persuaded Network Rail to upgrade the track during two-week closure whilst both Parry People Movers out of service for planned maintenance.





Class 196 trains

12 x 2-car units / 14 x 4-car units
Being built by CAF in Spain / Newport
24m long vehicles
Replacing CI153s & Class 170s



**For use solely on WMR routes incl. Hereford & Shrewsbury
4 x 4-car units already in Tyseley for Fault Free Running and Testing
18 of the 26 units built or part-built, all due to be produced by early 2021**



Class 196 train interiors

Driving a Revolution in Rail Services for West Midlanders

West Midlands Rail Executive

A 30-year Rail
Investment Strategy
2018-2047

December 2018



Refresh now underway
Programme for refresh not being rushed
Takes account of changes to underlying
assumptions

- COVID will affect rail demand for many years
- HS2
- IRP
- Decarbonisation

Transport Decarbonisation Plan
Electrification

- Faster
- Quieter
- Cheaper to operate
- More reliable
- Role for hydrogen/BEMU

MRH – need both chords

ANDY STREET'S 2040 PLAN FOR METRO AND RAIL IN THE WEST MIDLANDS



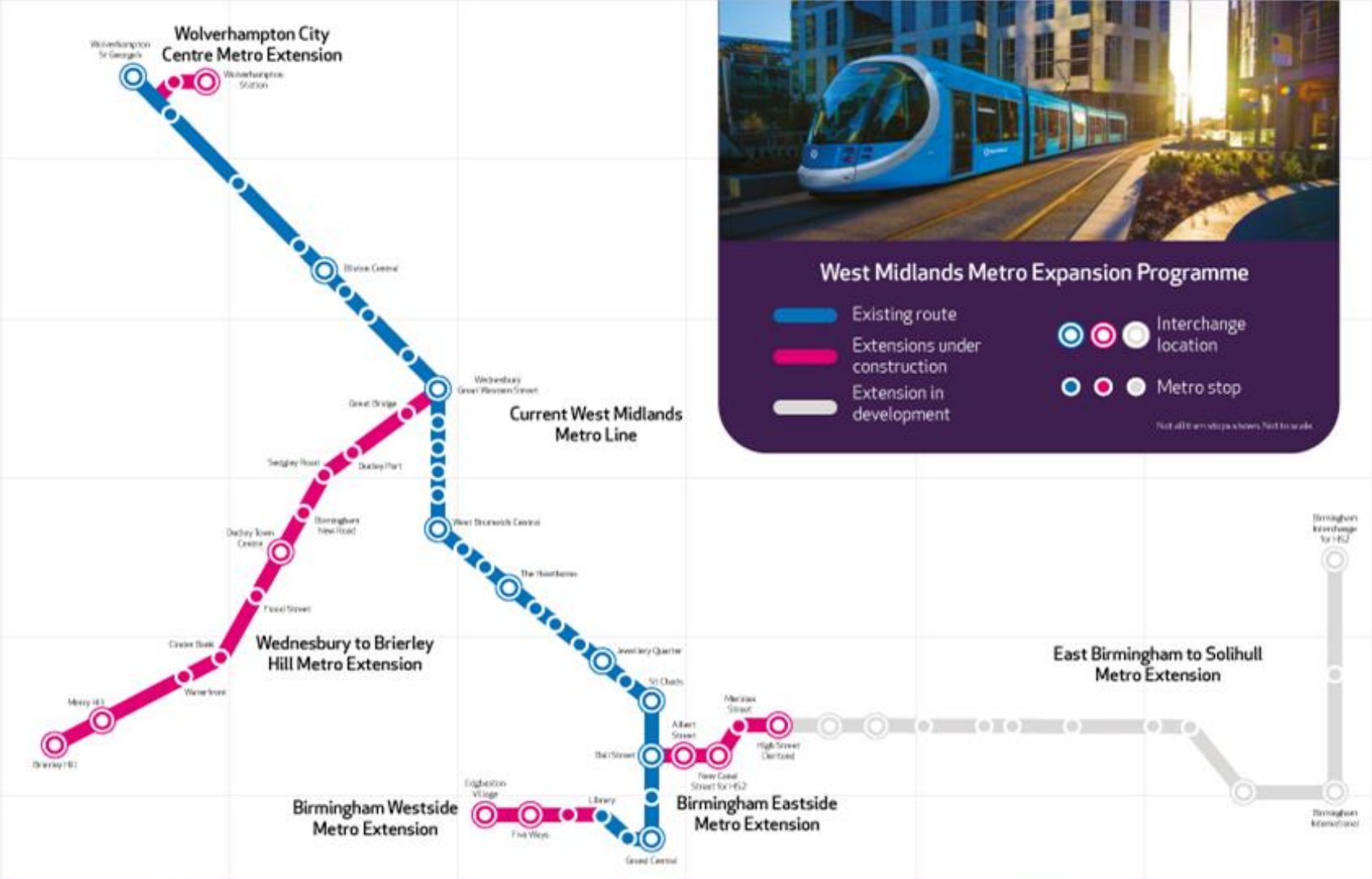
Stations/Lines:

- Coleshill/ Coundon Road
- Binley
- Tettenhall
- WSL – LIC
- Sutton Park
- LIC – BOT

RYR

Trams

Tram routes currently under construction and development:



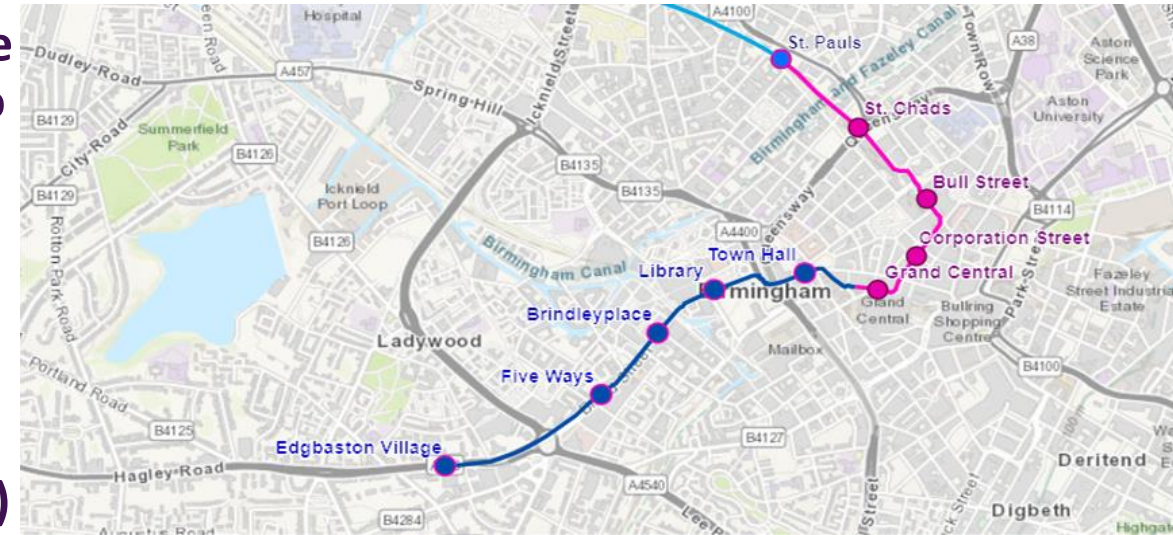
West Midlands Metro Expansion Programme

- Existing route
- Extensions under construction
- Extension in development
- Interchange location
- Metro stop

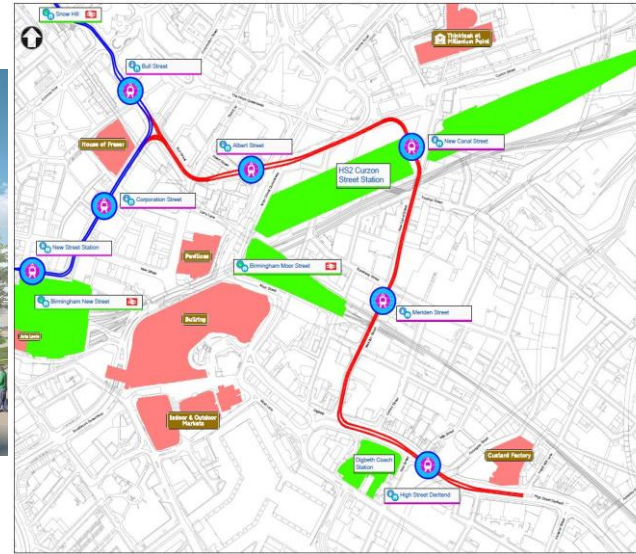
Not all items shown here. Not to scale.

Birmingham Westside Extension:

- Continuation of 'Line One'
- First phase to Centenary Square opened Dec 2019, phase two to open 2021 to Edgbaston (54 Hagley Road)
- Catenary free sections along the route (First in UK)
- Grass track at the Terminus Tram Stop (end of Hagley Road)



Birmingham Eastside Extension:

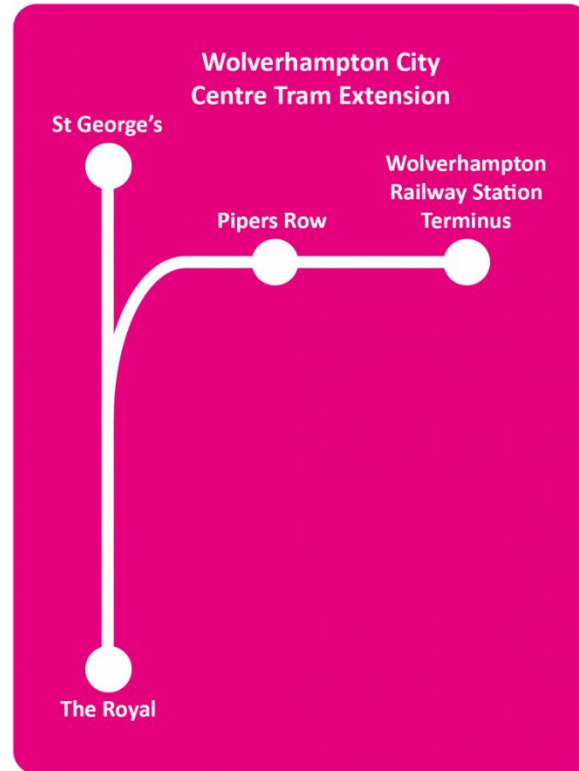


- **Route will spur from Line One at Bull Street serving Digbeth and HS2 at Curzon Street**
- **Construction commenced on Section 1 Delta Junction at Bull Street and Section 5**
- **Digbeth High Street to be completed prior to Commonwealth Games July 2022**
- **Interface to HS2 Curzon St is key for regional connections.**

Wolverhampton City Centre Metro Extension



- Construction has been underway in phases since 2018
- With construction team back on site now completing final works following station re-build completion

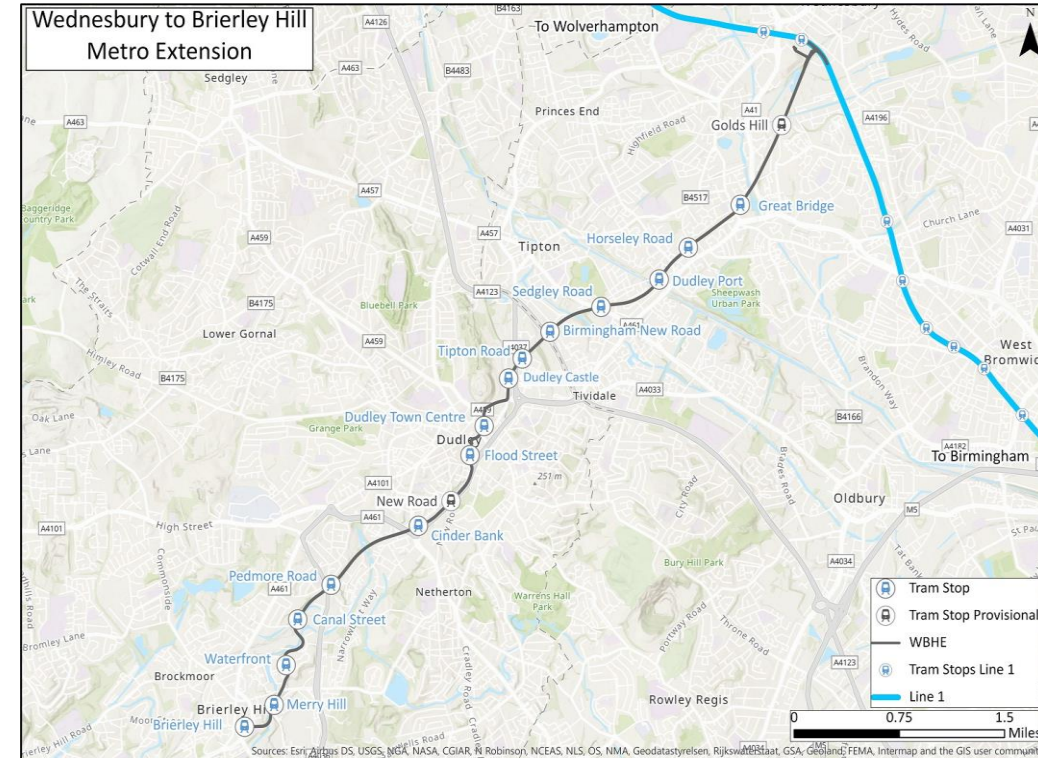


- Part of the award-winning Wolverhampton Interchange with partners including City of Wolverhampton Council
- Entry into service planned early 2022.

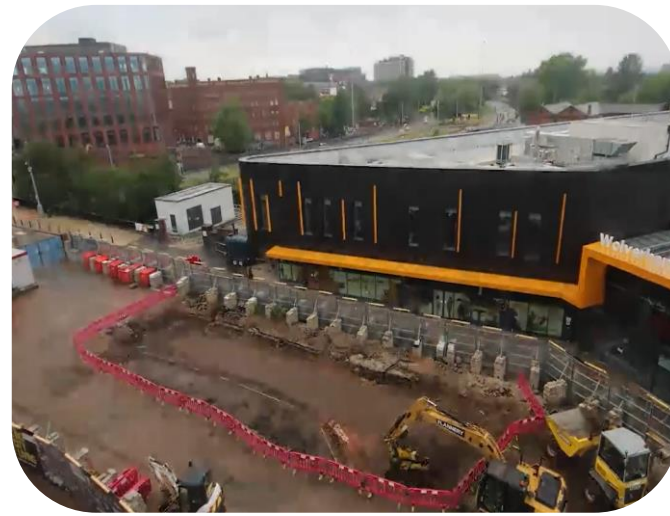
Wednesbury to Brierley Hill Metro Extension



- An 11km route
- Projected to trigger new homes and help regenerate the Dudley and Sandwell areas, with Dudley, in particular, capitalising on the route for a number of other projects, including:
 - Very Light Rail Centre
 - Dudley Institute of Technology
 - Dudley Bus Interchange
- It will also improve connectivity:
 - By standardising journey times
 - And link Dudley with both Wolverhampton and Birmingham by tram
- Open for passenger service in 2024 with considerable construction continuing during the pandemic



Travel time into Wolverhampton from Dudley by bus/car can vary depending on traffic. **Metro will provide a reliable 40 minutes.**



Work is already well underway for Metro in the both Birmingham and the Black Country...

...with even more to come throughout 2021



East Birmingham to Solihull Extension

In the development phase

17.5km further east from the city to Solihull

Regenerating East Birmingham and North Solihull

Allowing access by Metro to:

- Birmingham International Airport
- St. Andrews
- NEC
- Genting Arena
- HS2 Station at Birmingham International



Other potential Metro extensions:

Edgbaston Village
tram stop

along Hagley Road



Wednesbury
Great Western
tram stop

Via disused
railway corridor

Walsall

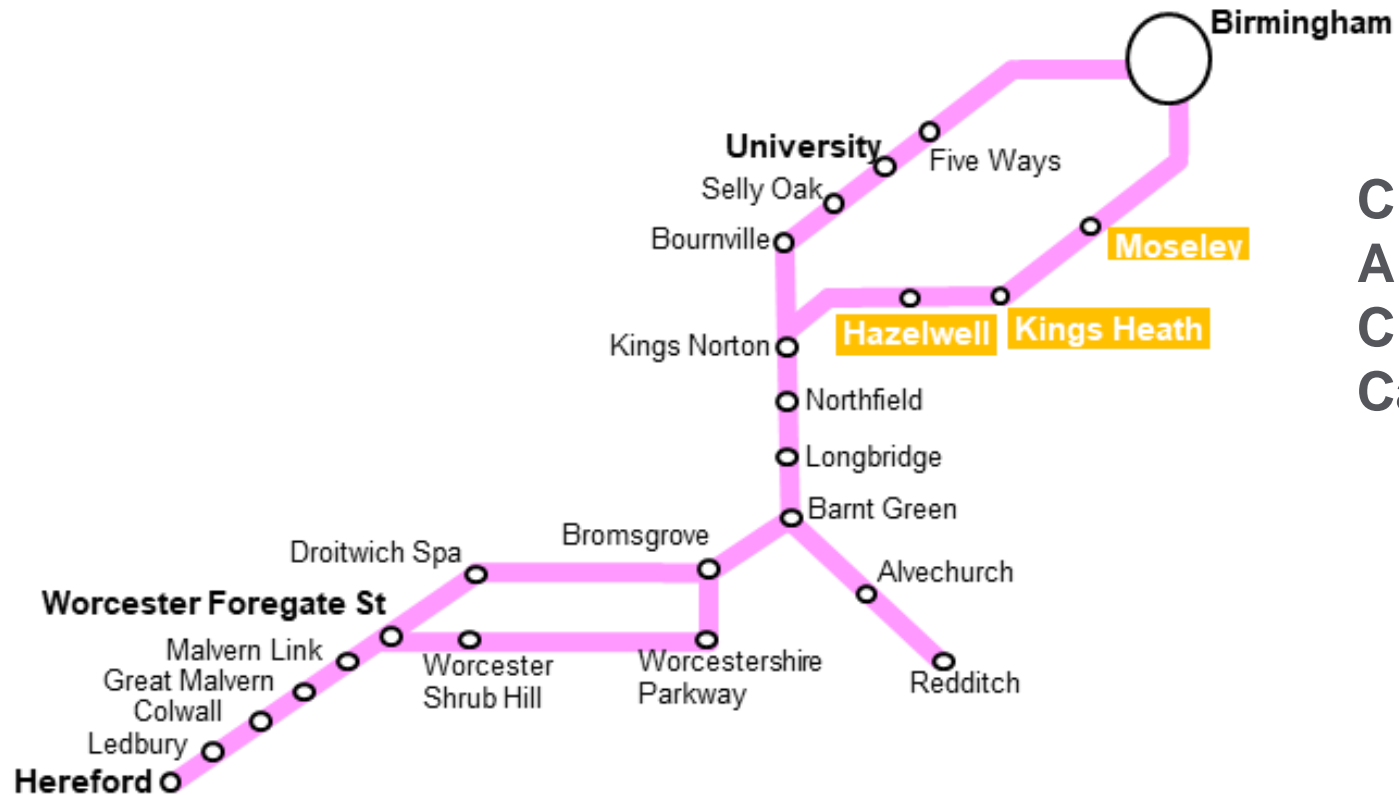
Willenhall & Darlaston Stations



Close to contract award

In timetable soon

Camp Hill Line Stations



**Closure was wartime economy
Alcester Road
Closed in 1965
Camp Hill**

- Relocated badgers
- Procurement
- Timetable – 4tph on Cross City

Perry Barr station rebuild – computer generated image of new station



Perry Barr station rebuild – removing old station



BRITISH RAIL
STATION

PERRY BARR

AGE
Concern

Perry Barr

Tel: 0121-351-428

SEL
CHIPS

One Stop
Shopping Centre
Car Park



University station – computer-generated image of rebuilt station



University station – computer-generated image of rebuilt station interior



West Midlands
Rail Programme

University station rebuild – under construction



University station rebuild – under construction



University station rebuild – under construction



Coventry Masterplan



Wolverhampton station





**West Midlands Rail Executive is
a movement for change, driving
a revolution in rail services for
West Midlanders**

**Need to respond and adapt
Big change ahead
Challenges – demand/costs
Rail is part of recovery
Reason to be optimistic**