



# Railfuture Mini Conference

## East Anglia, East Midlands and Lincs

### PETERBOROUGH MUSEUM & ART GALLERY



**Thursday 15 May 2025**

**Presentations start at 13.00**

**Break at 15.30**

**Finish 16.35**

**Thank you for your donations towards the cost of refreshments and food. Join Railfuture at <https://www.railfuture.org.uk/join/>**

## PROGRAMME

- Welcome — 13.00-13.05 (Ian Couzens, Chair, Railfuture East Anglia Branch)
- Infrastructure Developments
  - Lewis Banks, Peterborough City Council, Station Quarter — 13.05-13.35
  - Tom Ingall, Great Central Railway, Reunification project — 13.35-14.10
- Passenger Services
  - Martijn Gilbert, First Rail, open access — 14.10-14.50
  - Anthony Smith, Independent Rail Retailers — 14.50-15.30
- Interval — 15.30-15.45
- Rail History — Rail 200 Celebration (introduced by David Harby, Chair, Railfuture Lincolnshire Branch)
  - Barry Coward, Former BTF archivist, presenting a video — 15.45-16.30
- Thanks to guest speakers to closing remarks – 16.30-16.35 (Phil Thomas, Chair, Railfuture East Midlands Branch)



# WELCOME TO PETERBOROUGH



**Ian Couzens**

**Railfuture East Anglia Branch Chair**

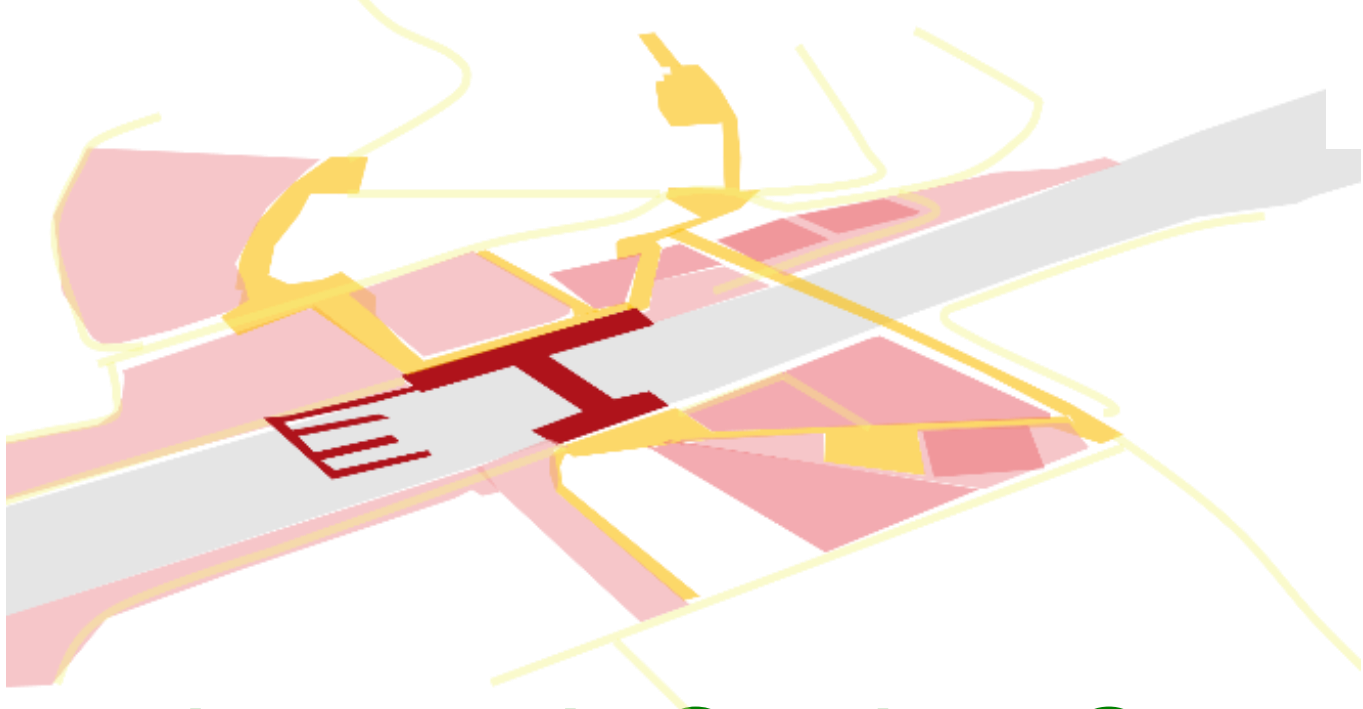
# LEWIS BANKS

## TRANSPORT & ENVIRONMENT MANAGER

### PETERBOROUGH COUNCIL

#### STATION QUARTER WESTERN ENTRANCE





# Peterborough Station Quarter

[15 May 2025]

[Railfuture Conference]

Lewis Banks – Peterborough City Council

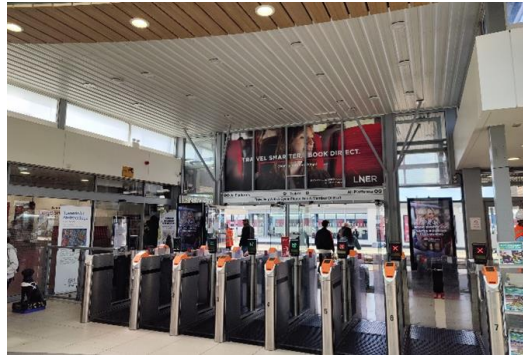
# Peterborough Station Quarter

- Delivered in collaboration with Network Rail, LNER and the CPCA
- Secured £47,850,000 in Levelling Up Funding (Round 2)
- Secured £1,455,000 in Towns Fund grant towards delivery of City Link
- Full Business Case has been submitted to Government
- Waiting on the announcement for funding of the construction phases



# Current station

---



# Project Aims

---



CREATE A  
WELCOMING AND  
VIBRANT  
DESTINATION ON THE  
EAST AND WEST  
SIDES OF THE  
STATION



MAKE THE STATION  
EASIER TO ACCESS  
WITH A NEW  
ENTRANCE ON THE  
WESTERN SIDE



MAKE THE STATION  
MORE ATTRACTIVE BY  
ENHANCING THE  
NEARBY  
SURROUNDINGS TO  
BE MORE FRIENDLY  
AND INVITING FOR  
RESIDENTS AND  
VISITORS



TO IMPROVE  
CONNECTIONS  
BETWEEN CITY  
CENTRE AND THE  
STATION



HELP UNLOCK  
FUTURE  
DEVELOPMENT AS  
PART OF THE  
MASTERPLAN



# Key Components

---

Creation of a new western entrance, improving access to the station for all modes and alleviating highway and passenger congestion

A new multi-storey car park on the western side of the station, increasing the number of accessible parking spaces close to a station entrance

A refurbished eastern station building with more circulation space and a relocated entrance to provide a better customer experience and to reduce passenger congestion

A new station square, linking to an attractive and accessible route to the City centre

# Public consultation

---

Public consultation ran from 19 August – 25 September 2024

- 390 survey responses
- 1-2-1 sessions with Cycle Forum, Civic Society, Accessibility Forum
- 47 businesses engaged



In summary, responses showed:

- Strong support for the project
- Priorities included improved pedestrian and cycle connectivity, accessibility (wayfinding and ramps), sustainability (low carbon construction and SUDs)

# Scheme General Arrangement

---



# West side

---

- New western station building providing passenger access
- Station drop off and servicing
- New signalised junction off Thorpe Road, accessible from the east and west
- New multi-storey car park (Approx. 460 spaces)





# City Link

---

- Northern subway is retained
- Infilling of southern subway Queensgate roundabout enhancing accessibility and attractiveness of the route (also includes infilling of western subway)
- Improved landscaping to improve quality of the space
- At grade pedestrian crossing towards Cowgate



# Scheme Overview



# CITY LINK – Looking towards Cowgate





# CITY LINK – Looking towards Station



# Western Entrance & Station Building



# PSQ Next Steps

---

- Final Business Case submitted 17<sup>th</sup> March 2025
- DfT Investment Committee presented to on 28<sup>th</sup> April 2025
- Finalise construction programme and enter relevant legal agreements with partners
- Activity on site to commence in autumn 2025 starting with City Link (Queensgate Roundabout)

# Q&A – LEWIS BANKS

## TRANSPORT & ENVIRONMENT MANAGER

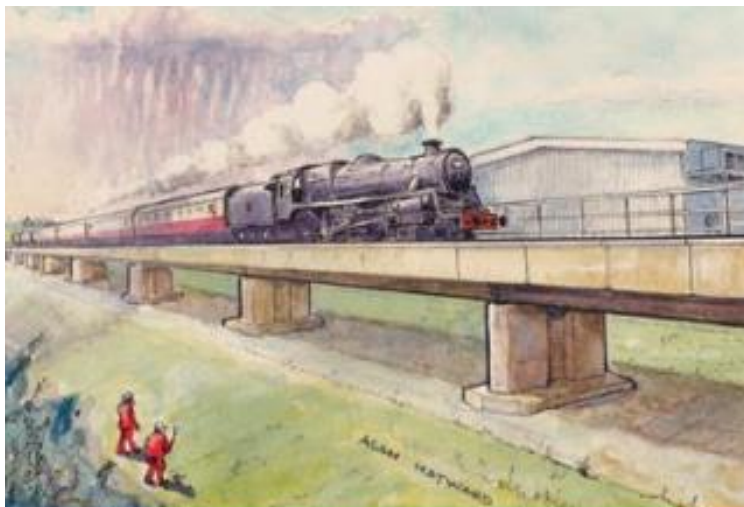
### PETERBOROUGH COUNCIL

#### STATION QUARTER WESTERN ENTRANCE



# TOM INGALL

## GREAT CENTRAL RAILWAY REUNIFICATION PROJECT



THE UK'S BIGGEST HERITAGE  
RAILWAY PROJECT

[www.gcrailway.co.uk/unify](http://www.gcrailway.co.uk/unify)



Donations by online banking to  
The David Clarke Railway Trust  
More info about project and donating:  
[www.gcrailway.co.uk/unify](http://www.gcrailway.co.uk/unify)



BRITAIN'S BIGGEST HERITAGE RAILWAY PROJECT

2025 UPDATE

*The slides shown here are only a fraction of what Ton Ingall presented to Railfuture at this event, and do not include any videos. Please contact Tom via the GCR if you wish him to give a similar presentation to your organisation*

The big vision



Reconnecting two halves  
of the Great Central Railway

The Midland is  
built in 1840

Meanwhile in Loughborough

The Central  
opens in 1899



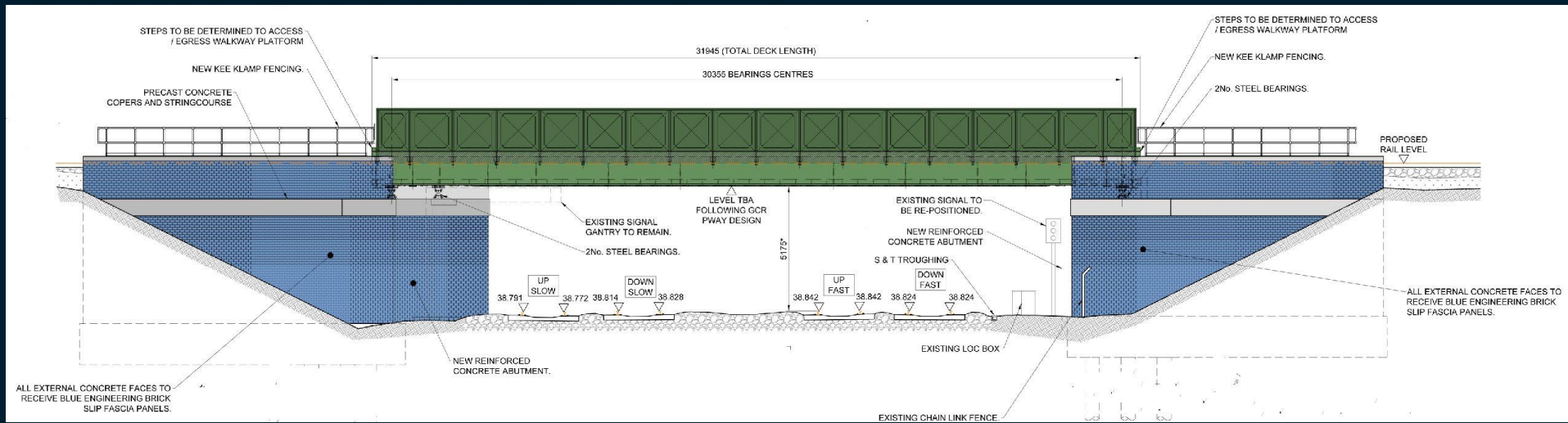
Why reconnect the two heritage railways?

## A NATIONAL SHOWCASE FOR OUR RAILWAYS

Heritage locomotives, carriages,  
wagons, signals and stations,  
operating right in the heart of  
the country as an educational  
legacy for future generations.



# Reinstated bridge over the Midland Mainline



No central pier for the new bridge (unlike the original)





September 2017: Bridge beams installed



South of the Midland Main Line Bridge

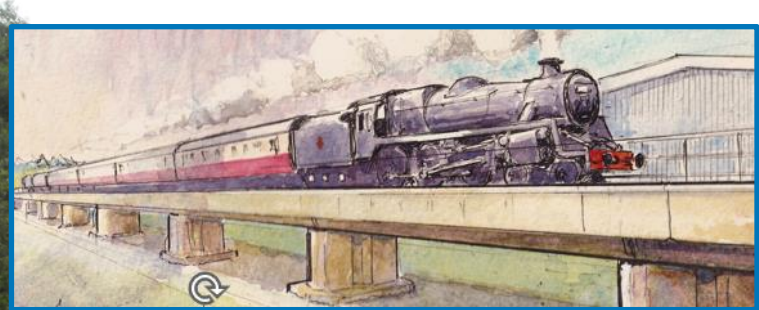
Railway Terrace 1898



and in 2024



The new railway needs to be higher leaving more clearance for bin lorries – they need more clearance than an electrified railway.



New factory makes rebuilding the original embankment difficult

New Reunification line will be about eight metres to the east of the original track alignment

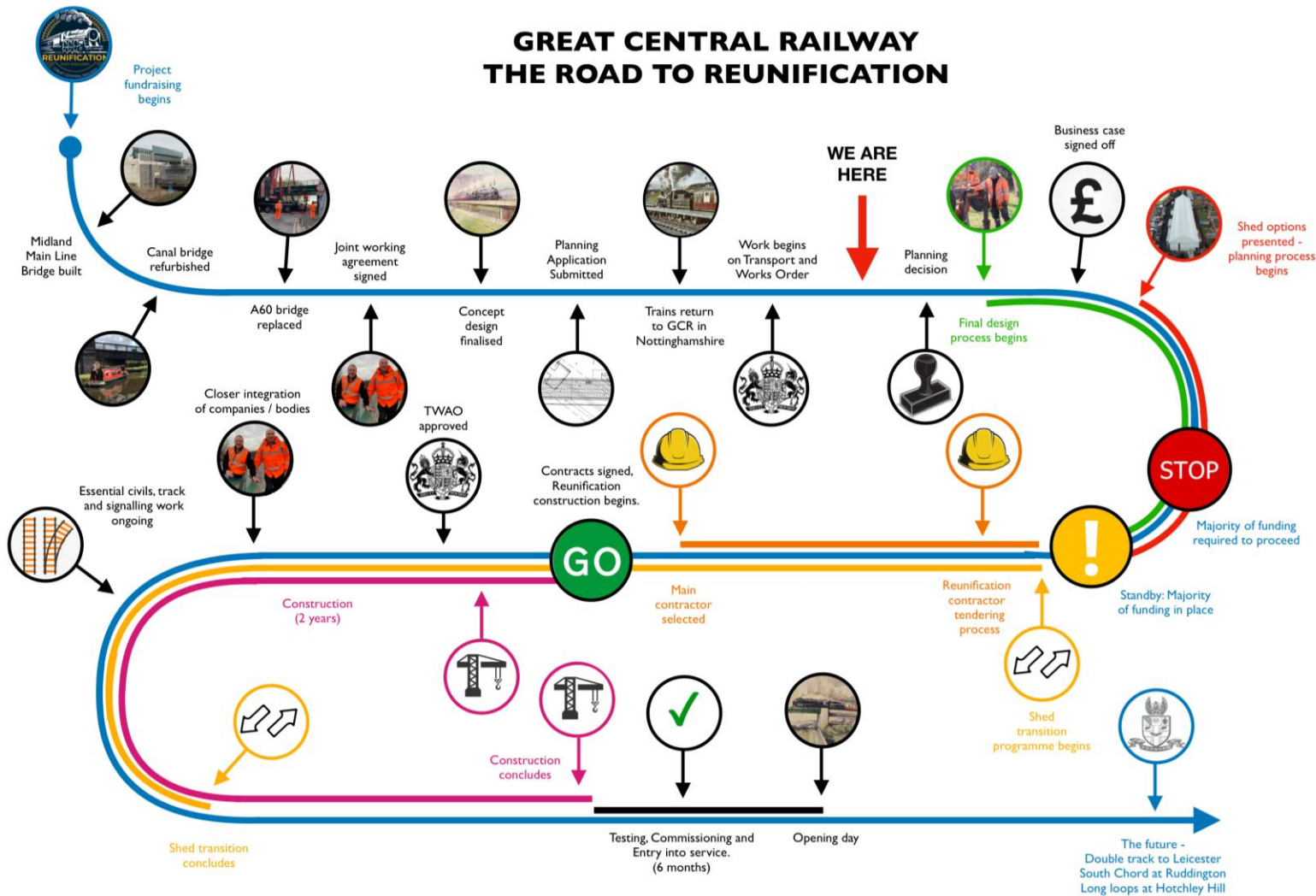
Route of the original embankment after Railway Terrace bridge.

Embankments need to be wide in order to be stable (gentle gradient) but there is insufficient space for that – hence an ‘urban viaduct’ (inset) will be built instead.



The two railways are staging joint events, sharing team members and publicity

# GREAT CENTRAL RAILWAY THE ROAD TO REUNIFICATION





## Also underway...

- Transport and Works Act Order - process underway.
- Draft timetables - the start of operational planning to be one railway.
- Detailed business plan for funders.
- Infrastructure planning as one railway - from cabling, to track and signals.
- A never-ending fundraising campaign

Currently banked - an amazing war chest!

£2,500,000

Good news - that's the total *after* the majority of the planning phase bills have been paid.

When will it be finished?

From signing contracts to opening day could be around 3 years if we can do the whole thing at once.

What is absolutely true is, every pound that is donated makes a difference.

**Don't wait for others. If you want to see it done, please donate now.**

Thank you.



**£500,000**

**upcoming expense**

We'll need to spend around £500,000 to turn designs into engineering blueprints, so not all of the war chest is available to spend on work

We hope you will donate - but here  
are two ways you can also help us.

**SPREAD  
THE WORD**

Who do you know who  
would  
like a talk?

**WATCH OUR  
YOUTUBE FILMS**

Search  
GCROFFICIAL  
on YouTube

[www.gcrailway.co.uk/unify](http://www.gcrailway.co.uk/unify)

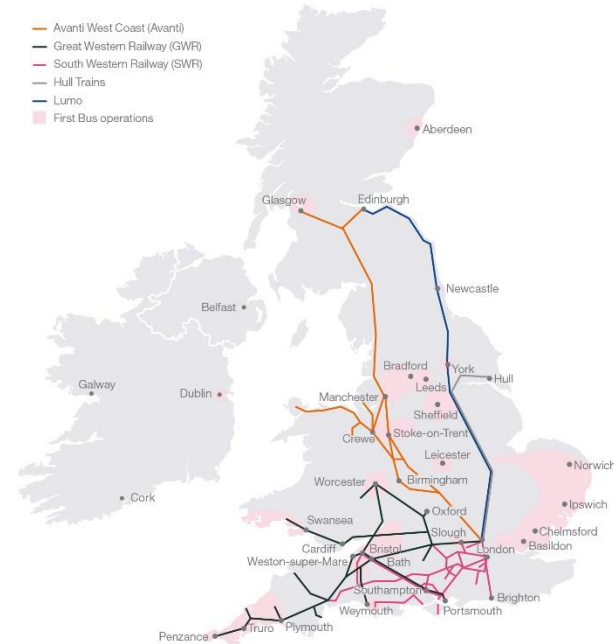
# Q&A – TOM INGALL

## GREAT CENTRAL RAILWAY REUNIFICATION PROJECT



Donations by online banking to  
The David Clarke Railway Trust  
More info about project and donating:  
[www.gcrailway.co.uk/unify](http://www.gcrailway.co.uk/unify)

# MARTIJN GILBERT - FIRST GROUP MANAGING DIRECTOR, OPEN ACCESS, TRAM & CABLE





# ♥ HullTrains

- ▷ 25<sup>th</sup> year of operation
- ▷ 125 colleagues
- ▷ 5 trains (bi-mode)
- ▷ First + standard offer
- ▷ 97 services a week

Hull – Brough – Howden – Selby – Doncaster – Retford – Grantham - London



# lumo

- ▷ Launched Oct 2021
- ▷ 105 colleagues
- ▷ 5 trains (100% electric)
- ▷ One class offer
- ▷ 70 services a week

Edinburgh – Morpeth – Newcastle – Stevenage - London



See Martijn Gilbert's full set of slides at: <https://www.railfuture.org.uk/display4017>

# Q&A – MARTIJN GILBERT - FIRST GROUP MANAGING DIRECTOR, OPEN ACCESS, TRAM & CABLE



# ANTHONY SMITH

## CHAIR, INDEPENDENT RAIL RETAILERS





# IRR

## Independent Rail Retailers

Anthony Smith  
Chairman



# OUR MEMBERS

**assertis**

**atomised**

**evolvi**<sup>®</sup>  
Rail Systems

*FastRailTicketing*

 MyTrainTicket

**OnTrack**

**omio**

*raileasy*

 **trainline**

**Trip.com** Group™

# Q&A – ANTHONY SMITH

## CHAIR, INDEPENDENT RAIL RETAILERS



Anthony did not provide any slides but talked 'off the cuff'. He was asked various questions, including:

Are booking fees really needed?

Is fraud less of an impact than in the past?

Widespread use of contactless for short-distance journeys

What restrictions are placed on third-party retailers – including ability to sell rovers and ranger tickets

Innovations such as Real-Time Trains 'give me ideas' feature

Complaints about passengers being sold the 'wrong' ticket.

**INTERVAL**

**PLEASE RETURN WITHIN 15 MINUTES**

# BARRY COWARD

## INTRODUCED BY DAVID HARBY

**MACMILLAN**  
CANCER SUPPORT

In memory of Kev White



British Transport Films 1949-1986  
a presentation by Barry Coward  
BTF Archivist 1986-1996



The story of Britain's largest industrial film unit producing over 700 films and slide shows, winning over 200 awards, including a Hollywood Oscar



**PHIL THOMAS**

**CHAIR, RAILFUTURE EAST MIDLANDS BRANCH**

**REVIEW OF TODAY'S CONFERENCE**

**THANK YOU TO OUR GUEST SPEAKERS  
AND TO EVERYONE WHO CAME TODAY**

JOIN RAILFUTURE AT [WWW.RAILFUTURE.ORG.UK/JOIN/](http://WWW.RAILFUTURE.ORG.UK/JOIN/) - £20 A YEAR

**RAILFUTURE AGM 2025 IN NEWCASTLE ON SATURDAY 5 JULY – CELEBRATING  
THE ENORMOUSLY SUCCESSFUL REOPENING OF THE NORTHUMBERLAND LINE**

**THANK YOU FOR ATTENDING  
GOODBYE**