

The **monthly** branch newsletter of **railfuture** in London and the South East

Britain's leading *independent* campaign for a bigger better railway for passengers and freight

## More 'Decisions for Transport'

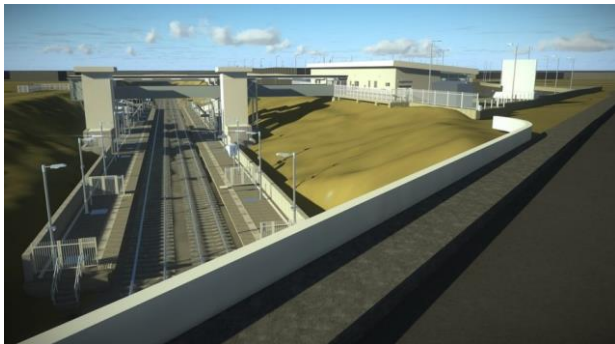
In Railfuture's *Rail Network Announcements Pipeline* (RNAP) two of last month's awaited six, and three additional ones, have emerged during February:

- ~ the application for a Transport and Works Act Order for [East-West Rail's Western section phase 2](#) was approved on 4 February;
- ~ the [Oakervee Review of HS2](#) has been published, and [government has confirmed](#) a qualified go-ahead.

Three additional important announcements have been:

- ~ 124 stations to benefit from £20million in the CP6 Access for All [Mid-Tier Programme](#), ten in our branch;
- ~ a third [New Stations Fund of £20million](#), for up to 75% support, closes to applicants on Friday 5 June;
- ~ Heathrow airport expansion has been dealt a blow by the [Court of Appeal](#). For Railfuture this does nothing to diminish the case for either the [Western Rail Link to Heathrow](#) or [Southern Access to Heathrow](#), which should be by [rail](#), as both are needed to achieve environmental and mode shift objectives.

Following January's announcement of the £500million [Restoring Your Railway Fund](#), updated [Guidance](#) on bidding for the new funds was issued in February.



New station on restored railway – the Oxford-Cambridge Varsity Line

Four Decisions for Transport remain outstanding:

- ~ the Williams Rail Review
- ~ the fates of Southeastern, GWR, SWR
- ~ the Fares and Ticketing Review
- ~ GTR's Passenger Benefit Fund results.

Happy railway birthdays in March:

- ~ 2014 – although in East Anglia branch's area the Bacon Factory Chord at Ipswich helps to keep freight for other regions of the country away from London;
- ~ 2008 – Heathrow Terminals 1-2-3 were connected to the new Terminal 5, and its new station opened;
- ~ 1991 – in East Anglia branch's area the north and south links to Stansted Airport, and its station, opened.

**Our vision for rail:** A railway system that provides services which travellers and freight forwarders want to use, and which offers more journey opportunities to more people and more freight.

## What have we been doing out there?

Since the early-February edition no.20 of *inter-railse* Railfuture in London and the South East has:-

- ~ published a web article about our '[Hoo-rail victory](#)'.
- ~ in liaison with other affected branches, [responded to East Midlands Railway's consultation](#) on its [proposals for the December 2020 timetable](#) which closed on Friday 14 February.

- ~ contributed to the national [response to the Office of Rail & Road's consultation](#) on [Accessibility of rail replacement services](#) which closed on 14 February.



- ~ enjoyed the novel concept at the turn of the month of a 'rail replacement rail service' when the Spa Valley Railway accepted Southern tickets for transfers at Eridge to and from Tunbridge Wells West during emergency engineering works, to arrest a landslide near Edenbridge Town, which had closed the Uckfield line.

## What shall we be doing out there?

**Network Rail's** consultation on the planned new [Cambridge South station](#) closes on Monday 2 March.

**Mole Valley District Council's** consultation on its "Future Mole Valley", the [draft Local Plan 2018-33](#) closes on Monday 23 March.

**Hertfordshire County Council's** consultation on its [draft Rail Strategy](#) closes Monday 30 March.

**Network Rail's** consultation on the planned [Reigate station upgrade](#) closes on Monday 6 April.

**Department for Transport's** consultation on [Closure of Newhaven Marine station](#) closes on Sunday 19 April.

We keep **asking our audience, you**, our members! What do **you** wish us to say? **Your comments** please, to [roger.blake@railfuture.org.uk](mailto:roger.blake@railfuture.org.uk) who will forward them to the Railfuture member leading on our response.

**Our vision for Railfuture:** An independent organisation whose views are respected by the rail industry, to which decision makers come for advice, and which rail users are proud to join and recommend.

## Calendar of forthcoming diary dates

**Saturday 29 February/Sunday 1 March** NO ECML services into/out of London King's Cross station.

**Saturday 29 February/Sunday 1 March** GEML services suspended to/from Liverpool Street.

**Sunday 1 March** Closing date to enter [RUG Awards](#).

**Monday 2 March** "Future Mole Valley" exhibition event for Local Plan 2018-33.

**Tuesday 3 March** Visit London Transport Museum's Acton depot.

**Wednesday 4 March** "Future Mole Valley" exhibition event for Local Plan 2018-33.

**Thursday 5 March** ORR publishes freight rail usage and performance for Q3 October-December 2019.

**Thursday 5 March** Sussex & Coastway Division.

**Friday 6 March** "Future Mole Valley" exhibition event for Local Plan 2018-33.

**Saturday 7/Sunday 8 March** GEML services suspended to/from Liverpool Street.

**Saturday 7 March** "Future Mole Valley" exhibition event for Local Plan 2018-33.

**Monday 9 March** "Vivarail D-train." Free evening talk in London by Adrian Shooter.

**Monday 9 March** "Asset protection – the protection of Network Rail assets interfacing with outside parties." Free evening talk in London.

**Monday 9 March** "The future of the rail industry beyond the Williams Rail Review." Evening talk in London by Paul Plummer, Rail Delivery Group CE.

**Monday 9 March** Bexhill Rail Action Group.

**Tuesday 10 March** "Breaking the mould - unlocking diverse career paths in rail." Evening talk in London.

**Wednesday 11 March** Eastern Division, Stratford.

**Thursday 12 March** ORR publishes passenger rail usage for Q3 October-December 2019.

**Saturday 14/Sunday 15 March** GEML services suspended to/from Liverpool Street.

**Monday 16 March** East West Rail Company public information drop-in event in Bedford.

**Tuesday 17 March** "The Light Rail Safety and Standards Board." Evening talk in Redhill.

**Wednesday 18 March** "HS2 – overview of asset management on the new high-speed railway." Free evening talk in Maidstone.

**Thursday 19 March** "Transport planning a more diverse and active future." Evening talk in London.

**Thursday 19 March** "Next steps in railway signalling and traffic management." Free evening talk in Stevenage.

**Saturday 21/Sunday 22 March** Railfuture London & South East regional branch stall at annual rail festival at Alexandra Palace, London N22 7AY.

**Saturday 21/Sunday 22 March** GEML services suspended to/from Liverpool Street.

**Tuesday 24 March** East West Rail Company public information drop-in event in Bedford.

**Tuesday 24 March** "Class 442 re-engineering." Free evening talk in Woking.

**Wednesday 25 March** "Disrupting disruption – improving customer experience when things go wrong." Free evening talk in London.

**Saturday 28 March** Herts & Beds Division, St. Albans. Developing a prospectus for the post-GTR era.

**Saturday 28/Sunday 29 March** GEML services suspended to/from Liverpool Street.

**Thursday 2 April** Sussex & Coastway Division.

**Monday 6 April** Bexhill Rail Action Group.

**Tuesday 7 April** "Brighton Main Line enhancement proposals." Evening talk in Lewes.

**Saturday 18 April** Wessex branch AGM, with speaker on new Welborne station, Southampton.

**Saturday 25 April** London & South East branch annual members' meeting with speakers, and AGM.

**Thursday 30 April** Closing date for nominations for Railfuture Campaigner of the Year 2020.

**Saturday 27 June** Railfuture national AGM, and presentations of RUG Awards and of Railfuture Campaigner of the Year 2020 award, Birmingham.

Full details in our [Events](#) and [Rail dates](#) web pages.

This branch e-newsletter is free, published monthly and distributed to branch members with their GDPR consent items for our newsletters, and our branch Local Action column in *railwatch*, to [londonandsoutheast@railfuture.org.uk](mailto:londonandsoutheast@railfuture.org.uk)



**Railfuture's mission: to be the number one advocate for Britain's railway and rail users**

**Website:** [Welcome to Railfuture](#) **Twitter:** [@RailfutureLSE](#)

Railfuture Limited is a not-for-profit Company Limited by Guarantee. Registered in England & Wales no.05011634.  
Registered Office: Edinburgh House, 1-5 Bellevue Road, Clevedon, North Somerset, BS21 7NP  
(for legal correspondence only). All other correspondence to: 24 Chedworth Place, Tattingstone, Suffolk IP9 2ND