

The **monthly** branch newsletter of **railfuture** in London and the South East

Britain's leading *independent* campaign for a bigger better railway for passengers and freight

## Pay-as-you-go further afield

Another campaign success? Ever since Oyster PAYG was introduced in June 2003 and extended to national rail in January 2010, after a pilot from January 2008, contactless payment has been enabled at a growing number of stations around our regional branch area.



In September 47 more stations were due to go live, and 45 more have been announced for roll-out in 2025 – 9 Chiltern stations, 19 in Greater Anglia's network, and 17 across the GTR network. Perhaps the most newsworthy addition has been Stansted Airport. Despite the current inability to load railcard discounts, we shall continue to press for that vital upgrade as 'tap-and-go' train travel becomes the new normal.

See Railfuture's [Rail user help / Finding the best price](#)

## What shall we be doing this month?

London and South East regional branch members, and / or committee members, will be:-

- ~ attending the final [public drop-in event](#) – in Tunbridge Wells – for Kent County Council's consultation on its draft Local Transport Plan 5 "*Striking the balance*."
- ~ finalising our response to Kent County Council's consultation for its [draft Local Transport Plan 5](#) "*Striking the balance*" which closes 8<sup>th</sup> October.
- ~ contributing at Network Rail's request to their Tonbridge Strategic Station Plan which follows on from their Medway Valley Line Strategic Study published earlier this year.
- ~ participating in the annual joint meeting of Southeast CRP's Oxted – Uckfield / East Grinstead lines' and Tonbridge – Redhill / Reigate steering groups.
- ~ participating in the annual Kent Rail Summit.

~ holding regular meetings of our Sussex & Coastway and Herts & Beds Divisions **online**.

~ holding a regular **online** meeting of the L&SE regional branch committee.

## What has @RailfutureLSE been doing?

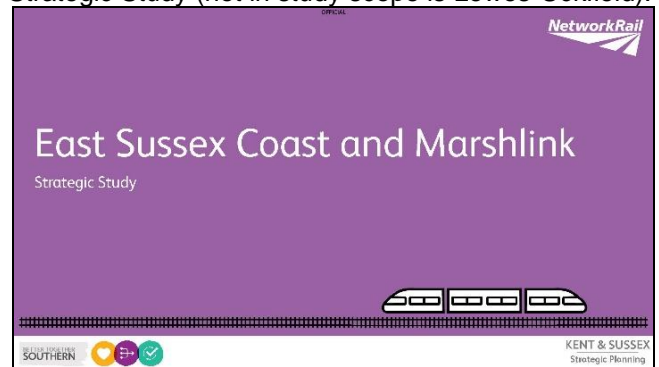
Since the early-September edition of **inter-railse** no.75, Railfuture's London and South East regional branch members, and / or committee members, have:

~ participated in Southeast CRP's North Downs Line AGM, held next to Farnborough North station.

~ attended public drop-in events for Medway Council's consultation in preparation for its [draft Local Plan 2041](#)

~ attended Kent County Council's public drop-in events for the consultation on its [draft Local Transport Plan 5](#), "*Striking the balance*."

~ contributed to Network Rail's request for comments for a new East Sussex Coastway and MarshLink Strategic Study (not in study scope is Lewes-Uckfield).



~ held regular meetings of our Sussex & Coastway, Herts & Beds and Eastern Divisions **online** and of our London Metro Division in-person.

~ held a regular meeting of the L&SE regional branch committee **online**.

~ submitted our response to Medway Council's latest consultation preparing for its [draft Local Plan 2041](#)

~ contributed to Railfuture's national # response to MHCLG's consultation on proposed revisions to the [National Planning Policy Framework](#) # representation for HM Treasury on [Autumn Budget 2024 / Spending Review 2025](#) by way of an endorsement of and supplementary comments on the submission by the [Railway Industry Association](#).

**Our vision for Railfuture:** An independent organisation whose views are respected by the rail industry, to which decision makers come for advice, which rail users are proud to join and recommend.

## Britain's Growing Railway in London and South East: October birthdays

~ 3<sup>rd</sup>, in 1988 – Arlesey in Central Bedfordshire, after a Before Beeching Closure (BBC) in 1959.

~ 5<sup>th</sup>, in 1981 – Kentish Town West, after a fire a decade earlier had necessitated its closure.

~ 22<sup>nd</sup>, in 1988 – How Wood, a new station on the Abbey Line as it was electrified.

~ 26<sup>th</sup>, in 2015 – new Chiltern services between London Marylebone and Oxford Parkway, via the new Bicester chord and reopened stations at Islip and Bicester Village – a first glimpse of East-West Rail!

**Our vision for rail:** A railway system that provides services which travellers and freight forwarders want to use, and which offers more journey opportunities to more people and more freight.

## Calendar of forthcoming diary dates

**Thursday 3 October** Kent County Council's final public drop-in event for consultation on draft Local Transport Plan 5 - "Striking the balance."

**Monday 7 October** Railfuture Thames Valley regional branch's open early-evening meeting in Oxford, with guest speaker from Arriva CrossCountry Trains, their Stakeholder Manager for West and Wales.

**Tuesday 8 October** Kent County consultation closes for draft Local Transport Plan 5 "Striking the balance."

**Wednesday 9 October** Herts & Beds Division **online** evening meeting. [Invite non-members!](#)



southeastern

**Sunday 13 October** End of direct award services contract between the Secretary of State for Transport, DfT OLR Holdings Ltd and SE Trains Ltd dated 16 October 2021.

**Thursday 17 October** Sussex & Coastway Division **online** evening meeting. [Invite non-members!](#)

**Friday 18 October** Copy date for your campaign news / reports for the London & South East regional

branch Local Action column in December's *railwatch* no.182, and for December's *railse* no.166.

Send to [londonandsoutheast@railfuture.org.uk](mailto:londonandsoutheast@railfuture.org.uk)

**Saturday 19 October** Start of service suspension between Hastings and Rye to Sunday 3 November.

**Saturday 19 / Sunday 20 October** – MarshLink closure between Hastings and Ashford International.

**Saturday 19 October-Sunday 3 November inclusive**

– MarshLink closure between Hastings and Rye for works to Ore Tunnel (1402 yds between Ore and Three Oaks, not to be confused with Mount Pleasant Tunnel at 230 yds between Ore and Hastings).

**Monday 21 October-Saturday 2 November**

**inclusive** – MarshLink shuttle train service between Rye and Ashford International, approx. 07:30 to 18:30.

**Saturday 26 October – Sunday 3 November**

Schools' autumn half-term holiday: >95% of the rail network remains open for customers!

Enjoy your local heritage railways.

**Monday 28 October** Copy date for your campaign news, letters, articles, photos to appear in December's *railwatch* no.182. Send to [editor@railwatch.org.uk](mailto:editor@railwatch.org.uk)

Full details in our [Events](#) and [Rail dates](#) web pages.

## Railfuture is 'in the news' / 'making the news' / sharing 'news and views'

~ Stay abreast of Railfuture members making, not just watching, things happen in our website [media extracts](#).

~ Stay abreast of Railfuture making, not just reporting, the news through our [press releases](#).

~ Stay abreast of Railfuture's and others' reports and thoughts published in our [website articles](#).

~ Railfuture is active on [Twitter](#) / [Facebook](#) / [LinkedIn](#).

## Railfuture publications by email

~ All members – individual, joint, affiliated organisation eg rail user group or similar, or a business – are being encouraged to receive [Railwatch](#) direct to their Inbox immediately on publication by logging-in at [Member services](#); it's accompanied by branch newsletter [railse](#).

~ All members can receive Railfuture's regular monthly newsletter [Rail User Express](#) and occasional [Rail Action](#) bulletin direct to their Inbox upon publication.

This branch e-newsletter is free, published monthly and distributed to branch members with their GDPR consent Items for our newsletters, and our branch Local Action column in *railwatch*, to [londonandsoutheast@railfuture.org.uk](mailto:londonandsoutheast@railfuture.org.uk)

# railfuture

**Railfuture's mission: to be the number one advocate for Britain's railway and rail users**

**Website:** [Welcome to Railfuture](#) **Twitter:** @RailfutureLSE

Railfuture Limited is a not-for-profit Company Limited by Guarantee. Registered in England & Wales no. 05011634.  
Registered Office: Edinburgh House, 1-5 Bellevue Road, Clevedon, North Somerset, BS21 7NP (legal correspondence only).  
All other correspondence to 14 Ghent Field Circle, Thurston, Suffolk IP31 3UP