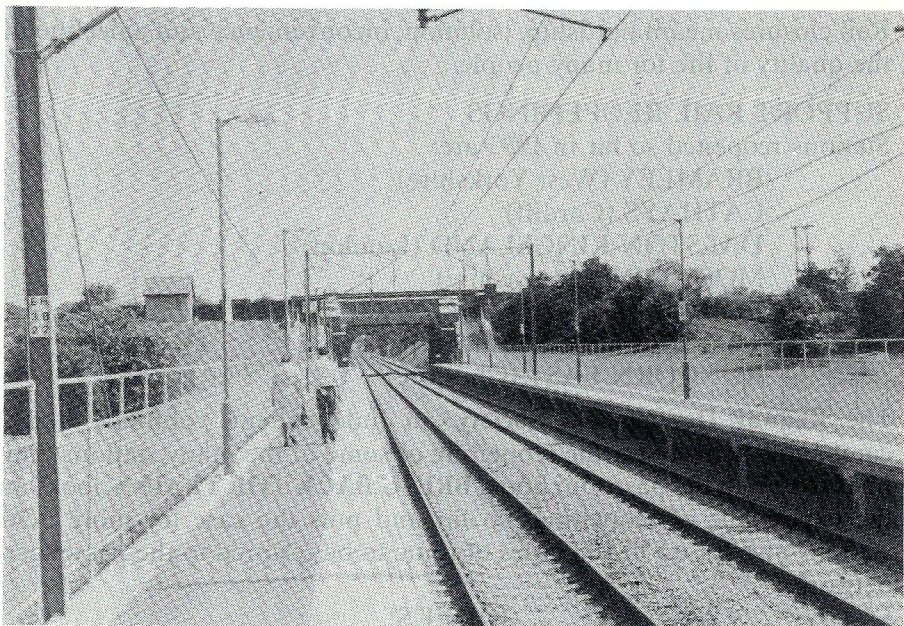


THIS IS WATTON-AT-STONE STATION, REOPENED IN MAY 1982



This station serves a growing village between Hertford and Stevenage. It had been closed in 1939 and subsequently demolished. The new station cost £150,000, most of which was paid for by the local authorities and British Rail, but also including £3,000 raised by individuals and voluntary bodies including the Railway Development Society.

Watton-at-Stone is a staffed station with an hourly electric train service throughout the day. Following a Railway Development Society initiative, it also had its first seaside excursion in August 1983.

80 new stations have been built, or closed ones reopened, on British Rail since 1965. Over 30 miles of line have also been reopened by BR or Passenger Transport Executives.

COULD YOUR STATION OR SERVICE BE NEXT?

Buses to replace trains were generally a failure.
The cost of private motoring continues to rise and future oil reserves will be limited.

Rail closures meant hardship, isolation, inconvenience and a decline in the quality of life for many people.

SUPPORT RAIL REOPENINGS

Stations reopened so far in 1983 are:

- BRAMLEY (West Yorkshire)
- CATHAYS (Cardiff)
- DALSTON KINGSLAND (London)
- MOSS SIDE (Lancashire)
- PINHOE (Devon)
- TEMPLECOMBE (Somerset)
- RUNCORN EAST (Cheshire)

The **Railway Development Society**, an independent, voluntary body, campaigns actively for the reopening of some of the many stations and lines closed in the past. Our book, **BRING BACK THE TRAINS**, looks at the experience of reopenings so far and puts the case for more new stations and for up to 500 miles of route to be restored to the passenger network.

**JOIN US!
READ OUR BOOK!**

To: Mr E.J. Hastilow, 21 Norfolk Road, Sutton Coldfield, West Midlands, B75 6SQ

Please send me a copy of **BRING BACK THE TRAINS** for which I enclose £1.60 (inc. postage)

I wish to join RDS and enclose £

(Subscriptions: £5 ordinary members, families £5 plus £1 for each member of household; students and pensioners £3; students under 18 £2; corporate members £6; voluntary groups and Parish Councils £5.)

NAME:

ADDRESS:

.....